

# Ameri★Ken

America's Die Supply **SuperStore**

## The Ultimate Rotary Diecutting Punch

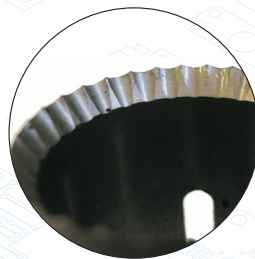
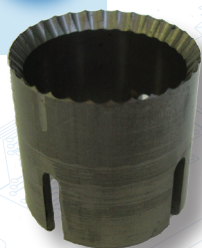
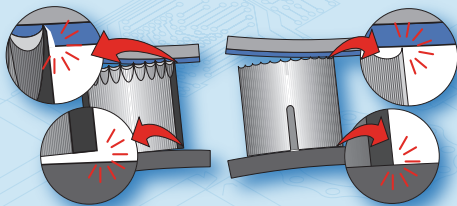
### Our Top of the Line Rotary Diecutting Punch



The **Ultimate** Rotary Punch brings a new standard to rotary diecutting. The innovative research team at AmeriKen worked with a leading rotary die house, including extensive field testing, to create the "Ultimate" Rotary Punch . . . a serrated rotary punch with all the bells and whistles, from top to bottom.

#### "Rotary Friendly"

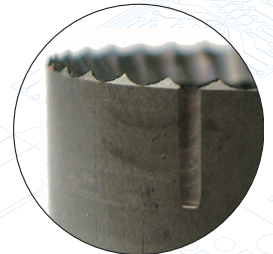
The radius applied to the top and bottom of the punch gives it a slight curvature resulting in a rotary friendly punch. The punch aligns perfectly to the radius of the cylinder. No more rocking, less tearing of the stock, less damage to the dieboard or anvil blankets, all with less cutting pressure.



*Serrated Inside Bevel aids Self Ejection*

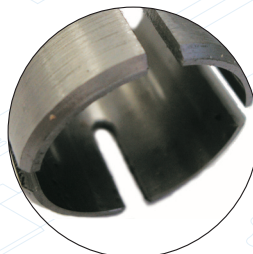
**Self Ejecting.** The serrated inside bevel has been engineered to a specific degree that allows the slug to "Pop" right out. The ejection is clean and easy.

**Radial Top.** Two alignment marks indicate the direction of the "Rotary Friendly" radius on the punch to ensure proper insertion into the die (see sidebar).



*Alignment Marks indicate radius for proper insertion*

**Self Adjusting Base.** Moving down the punch, four slots in the lower portion allows the base of the punch to "flex", ensuring an accurate, snug fit in the precut hole.



*Flex Slots allow a snug, accurate fit*

**Heavy Chamfered Base.** At the bottom, the heavy beveled edge allows a smooth, easy insertion in the dieboard.

**Radial Bottom.** The punch is engineered with a slight radius to the bottom, resulting in a curved punch that aligns perfectly with the curvature of a rotary cylinder. This unique feature prevents the common problem of "rocking" with



*Beveled Bottom eases insertion into the die*

standard punches that causes tearing of fiberboard. It also reduces damage to the dieboard and anvil blanket, and requires less cutting pressure.

The Ultimate Rotary Punch works with a wide range of different flutes and is available in many standard sizes. Other sizes available upon request.

Once again AmeriKen has raised the bar for diecutting punches by providing solutions to these common rotary diecutting problems. The unique features of this punch sets it apart from any other punch available on the market.

Why settle for a standard rotary punch when you can have the Ultimate Rotary Punch? Call your local AmeriKen representative today.

For complete information on our entire line of products, visit us online at [ameriken.com](http://ameriken.com).

**Ameri★Ken**

[ameriken.com](http://ameriken.com)

**BUY Ameri★Ken**  
**866-4-PUNCHES**

**866-4-PUNCHES**

Illinois 800.553.7777 ★ Nevada 800.553.6666 ★ Georgia 888.941.5097 ★ Texas 800.858.1699 ★ Florida 800.969.9521 ★ [sales@ameriken.com](mailto:sales@ameriken.com)